

Management Development Institute (MDI)

GURGAON (INDIA)

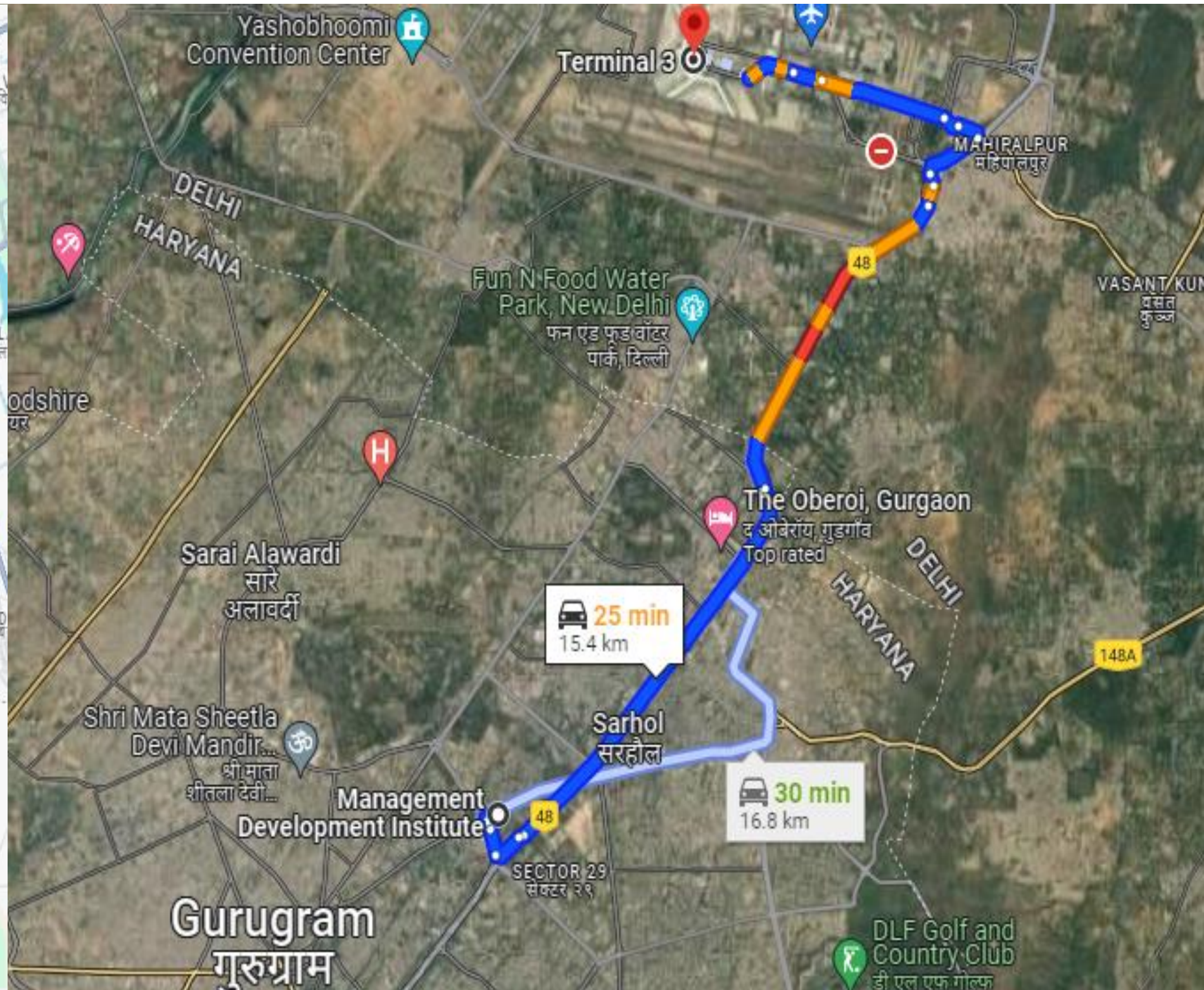
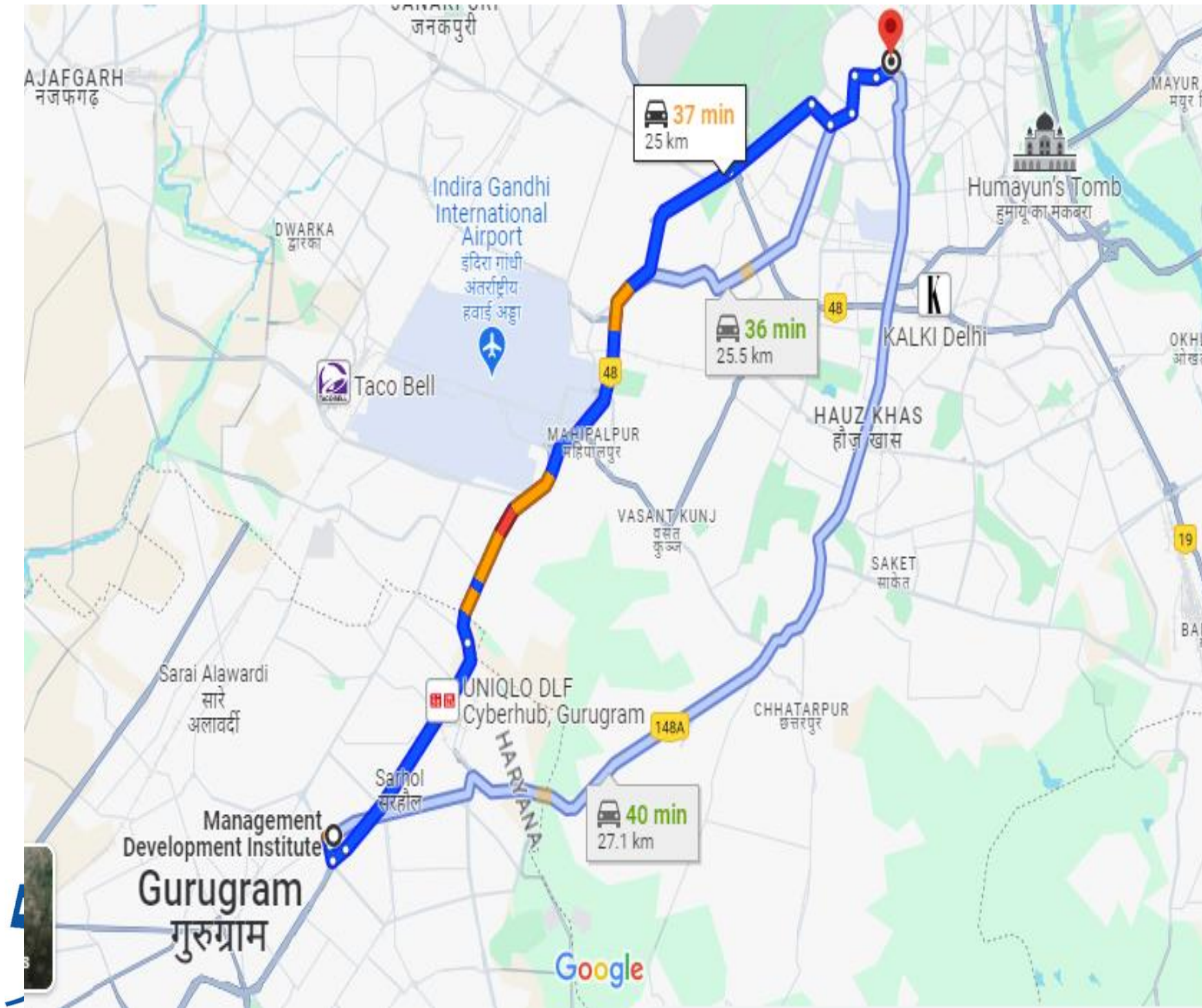
Global Engagements Office

(Mr. Vikas Kumar)



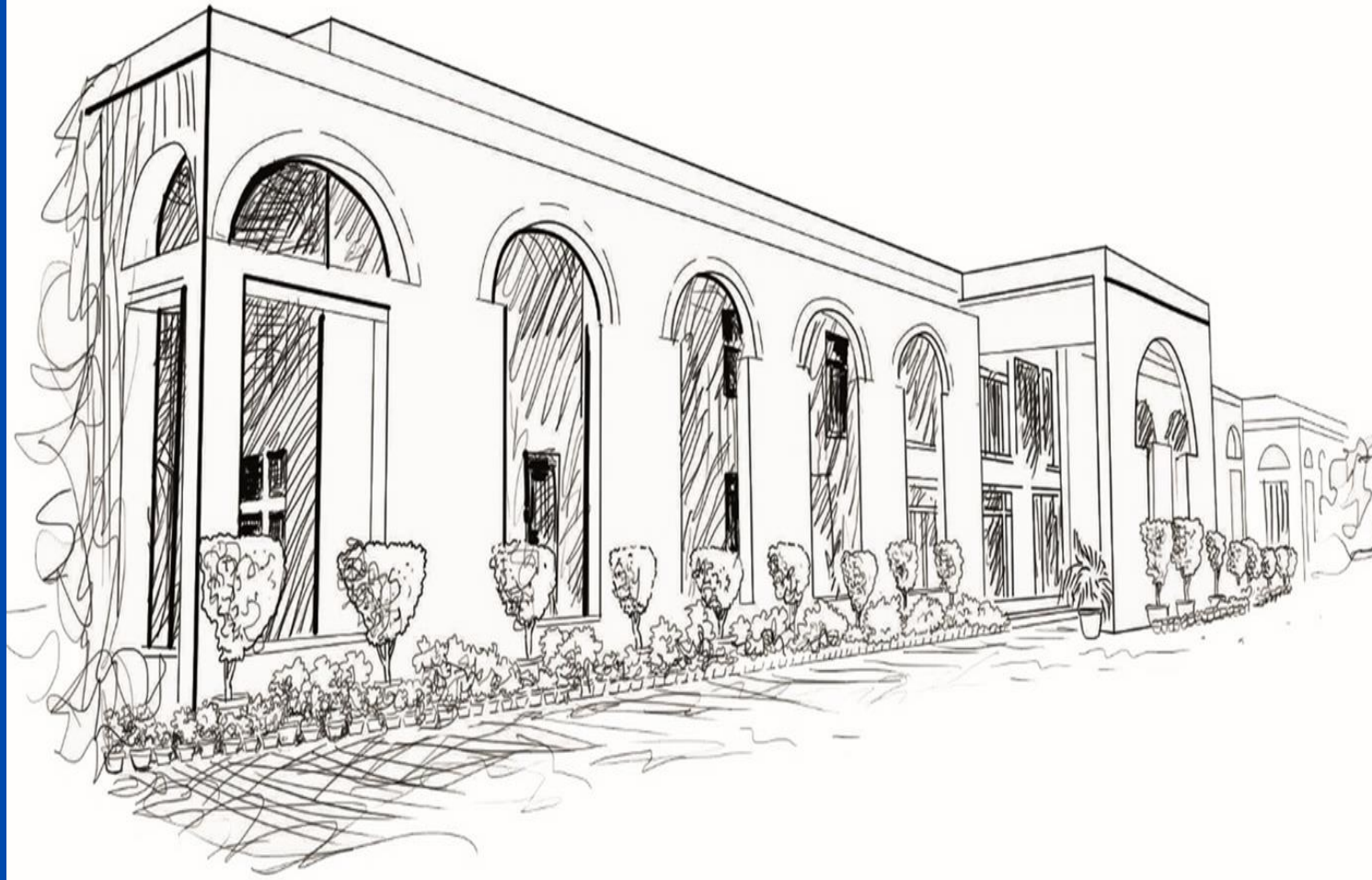
Geographical Presence

- Located 15km from the Airport & 25Km from the capital New Delhi

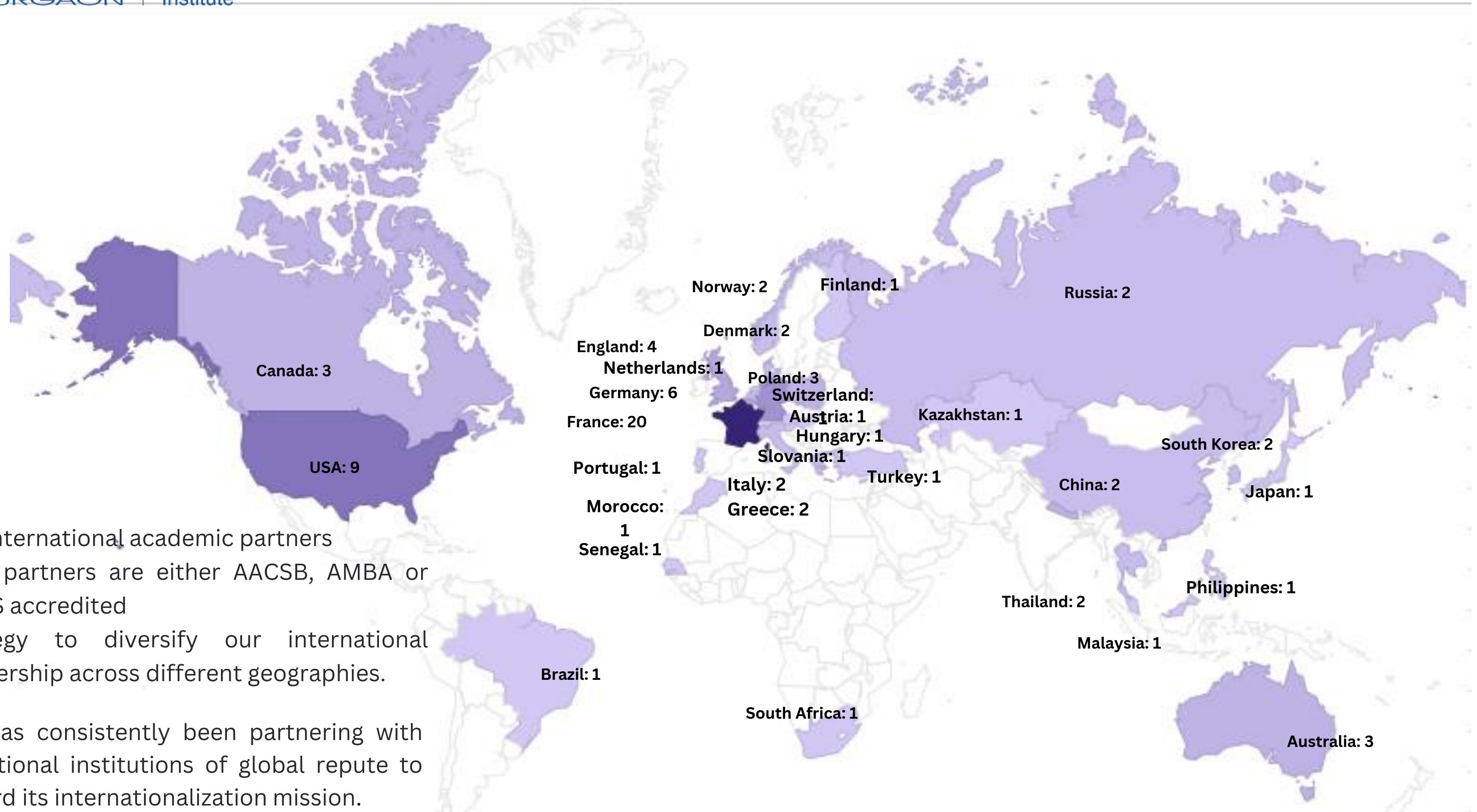


ABOUT MDI GURGAON

(An autonomous society and self-financing Institution)



- 3rd Oldest Business School of India
- Lush Green Campus, Located in the Corporate Hub of India
- First Indian B-School Accredited by AACSB, AMBA
- 95+ International Collaborations (Research, Faculty/ Student Exchange, Teaching) including Dual Degree programs
- 85+ Nationally and Internationally Acclaimed Full-time Faculty
- Largest School for Continuing Education (training to Corporate/ Govt/PSU professionals)
- 100% Placements Record in leading MNC's companies.
- Central location for connecting other cities of India, 20min drive from International airport



90+ International academic partners
 Most partners are either AACSB, AMBA or EQUIS accredited
 Strategy to diversify our international partnership across different geographies.

MDI has consistently been partnering with educational institutions of global repute to forward its internationalization mission.

ACADEMIC CALENDAR TERM-III

<i>Term-III</i>				
Monday	December 16, 2024	TERM –III COMMENCES (December 16, 2024 – March 22, 2025)		
	January 2025	Announcement of Electives/New Electives by the Area to PGDM/ PGDM-HRM/ PGDM Business Analytics students		
Wednesday	December 25, 2024	Wednesday	January 01, 2025	Winter Break
OPEN HOUSE -December, 2024 (in consultation with Chairperson-PGDM/ PGDM -HRM/ PGDM-BAN and Dean-GP)				
Thursday	January 02, 2025	Last Date for Submission of End-Term marks of Term-II*		
Wednesday	January 08, 2025	Last date for submission of complete result of Term-II		
Friday	January 10, 2025	Announcement of Electives/New Electives by the Area to PGDM/ PGDM-HRM/ PGDM Business Analytics students		
Wednesday	January 15, 2025	Result finalization meeting for Term-II		
Friday	January 17, 2025	Announcement of Result for Term-II		
Sunday	January 26, 2025	Republic Day (No classes)		
Friday	January 31, 2025	Sunday	February 02, 2025	Imperium (No Classes)
Tuesday	February 04, 2025	Friday	February 07, 2025	Mid Term Examination of Term-III
Monday	February 10, 2025	Term-III resumes after Mid Term Examination		
Friday	February 21, 2025	Last Date for Submission of Mid-Term marks of Term-III*		
Friday	March 14, 2025	Holi (No classes)		
OPEN HOUSE - March, 2025 (in consultation with Chairperson-PGDM/ PGDM -HRM/ PGDM-BAN and Dean-GP)				
Tuesday	March 18, 2025	Saturday	March 22, 2025	End Term Examination of Term-III

LIST OF AVAILABLE COURSES TERM III

PGDM

Business Ethics (Pre MT)

Corporate Social Responsibility (Post MT)

Corporate Finance

Management Information Systems

Organizational Design and Change

Research Methods in Business

Strategic Management-I

PGDM HRM

Compensation Management

Corporate Finance

Human Resource Information System

Learning and Development

Organizational Planning and Design

Research Methods

Strategic Management -I

PGDM Business Analytics

Supervised Learning

Management Information System

Marketing Practices and Implementation

Introduction to Finance

Strategic Management-I

Human Behaviour in Organizations

List of Business Schools from where students attended MDI Gurgaon under the Incoming Outgoing Exchange program

Incoming Students

Outgoing Student

<i>UC Louvain Belgium</i>	<i>Aarhus University, Denmark</i>
<i>ISM International School of Management, Germany</i>	<i>Aix-Marseille Graduate School of Business</i>
<i>School of Business and Social Sciences, Aarhus University, Denmark</i>	<i>Bergische Universität Wuppertal</i>
<i>Audencia Business School, France</i>	<i>Burgundy School of Business</i>
<i>Bergische Universität Wuppertal, Germany</i>	<i>Copenhagen Business School</i>
<i>Università Bocconi, Italy</i>	<i>EDC Paris Business School</i>
<i>NEOMA Business School, France</i>	<i>Emlyon Business School</i>
<i>Emlyon Business School, France</i>	<i>ESC Clermont</i>
<i>Grenoble Business School, France</i>	<i>ESCP Europe</i>
<i>WU-Vienna University, Austria</i>	<i>HEC Belgium</i>
<i>ESCP Europe Paris</i>	<i>Institut Mines-Telecom Business School Evry</i>
<i>Copenhagen Business School Denmark</i>	<i>International School of Management Dortmund Germany</i>
<i>HEC Belgium</i>	<i>Maribor University, Slovenia</i>
<i>HHL Leipzig Graduate School of Management, Germany</i>	<i>Nagoya University of Commerce & Business</i>
<i>Toulouse Business School, France</i>	<i>Pforzheim University, Germany</i>
	<i>Rotterdam School of Management, Erasmus University</i>
	<i>Sciences Po Lille</i>
	<i>SKEMA business school</i>
	<i>Solvay Brussels School of Economics and Management</i>
	<i>Toulouse Business School (TBS), Toulouse</i>
	<i>U C Louvain, Belgium</i>
	<i>University of Antwerp, Belgium</i>
	<i>University of Szeged, Hungary</i>
	<i>Vienna University of economics and business</i>
	<i>Warsaw School of Economics, Poland</i>
	<i>ZHAW School of Management and Law</i>

Exchange Terms Available for International Students

Term-III (16th December 22 March 2025)

Nominations accepted by MDI from Partners

For Term-III

October 30,2024

Student Registration

For Term-III

November 15,2024

Language(s) of Instruction : English

Course Load

- Students at MDI take a **minimum** of **12** and a **maximum** of **18** credits per term.
- Courses are usually 3 credits each but can be 1.5 credits as well.
- One credit implies **10 contact hours** of work in the classroom.
- The parent school determines the number of credit hours taken by exchange students. Usually, exchange students take 4-5 three-credit courses.
- International students can opt for courses from the PGPM and PGHR programmes offered by MDI.
- The medium of instruction for all courses is **English**.
- Course registration is done a day prior to commencement of classes and exchange students have flexibility to change a course within one week of registration

Grade	Value
C+	4
C	3
C-	2
D	1
F	0
I	-

Grade	Value
C+	4
C	3
C-	2
D	1
F	0
I	-

A student must satisfy the following conditions:

- **Minimum** CGPA of **4.0**
- **No "I" grade** in any course

- **Not more than** 4 'D's and 2 'F's (or) 1 'F' and 2 'D's

Of total 20 sessions, if a student is absent for **4 – 5 classes**, then the grade he or she has obtained will be **reduced by one letter**. (Example: A- to B-)

If he or she is absent for **6-8 classes**, grade will be **reduced by two letters**.

CAMPUS FACILITIES

01 CLASSROOM

The campus hosts, air-conditioned lecture halls, syndicate rooms, faculty and administrative blocks. The Campus also has residential accommodation for academic and administrative staff.



03 COMPUTER CENTER

A state-of-the-art computer center with Bloomberg terminals other facility consisting of 656 PC nodes/ laptop includes 10 IBM Pentium based servers, connected on a high speed Gigabit Ethernet Fiber Optic/UTP based network in a distributed Windows XP and Linux environment.



02 RECREATIONAL FACILITIES

TA Golf Course, Lawn Tennis, Badminton, Table Tennis, Billiards, Gymnasium, Recreation Room, T.V. Lounge and Canteen are some of the facilities provided on campus. Facilities like ATM, Internet and Medical aid are also available on the campus



04 LIBRARY

One of the best management libraries of the country Library holds a rich collection of printed as well as electronic resources which include books, journals, databases, audio-visual materials, and e-journals.



MDI is a residential campus for all students and its mandatory for all students to stay on campus .Student on Exchange need not to pay any tuition Fee.

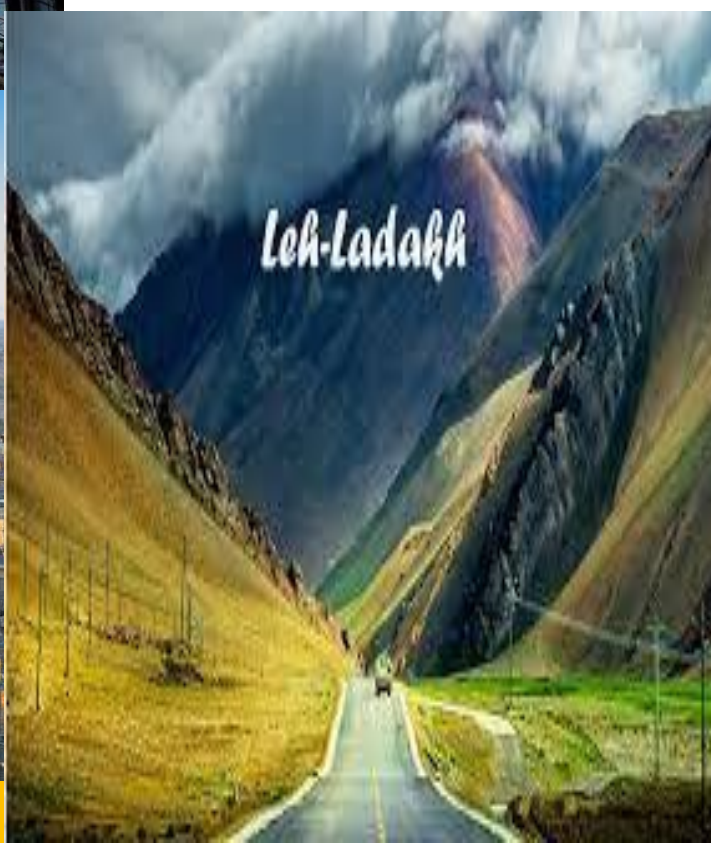
However the lodging & Boarding charges as applicable for term exchange duration, books and study material, ID card, laundry services need to pay himself/herself

Facility on campus that room are available on twin sharing basis are Air con Boarding charges as per approved yearly rates ditioned with attached bathrooms, rooms are having small kitchen and kind of apartment with balcony. Students need not to bring pillows, bed sheets and blankets available in their rooms. Free of cost Gym facility no membership fee.



INDIAN HERITAGE SITES TO CULTURVISIT FOR AL LEARNING

Distance (KM)	Heritage Cities to Visit	Heritage Sites Popular for
Upto 250	Delhi,Jaipur, Agra, Mathura,Rishikesh	Forts,Temples,Taj Mahal.Rocks-Trekking, Ganga River
250-500	Shimla ,Manali, Amritsar,Wagah (Indo-Pak) Boarder	Hill/Rocks-Trekking,Mountain,Temples
500-1000	Varansi, Ayodhya, Jaislmer, Jodhpur, Ujjain, Leh Ladhakh	Temples,Mountains/Rocks-Trekking,Forts
1000+	Goa, Mumbai, Bangalore, Hyderabad, Chennai, Kolkata	Beach, Corporates houses, City life, heritage sites in city, Missionaries



Pictures of ongoing Exchange Program from Sept-Dec 2024



THANK YOU!

You may like to connect with us !

GEO@mdi.ac.in

